



BACKGROUND INFORMATION OF THE DISTRICT

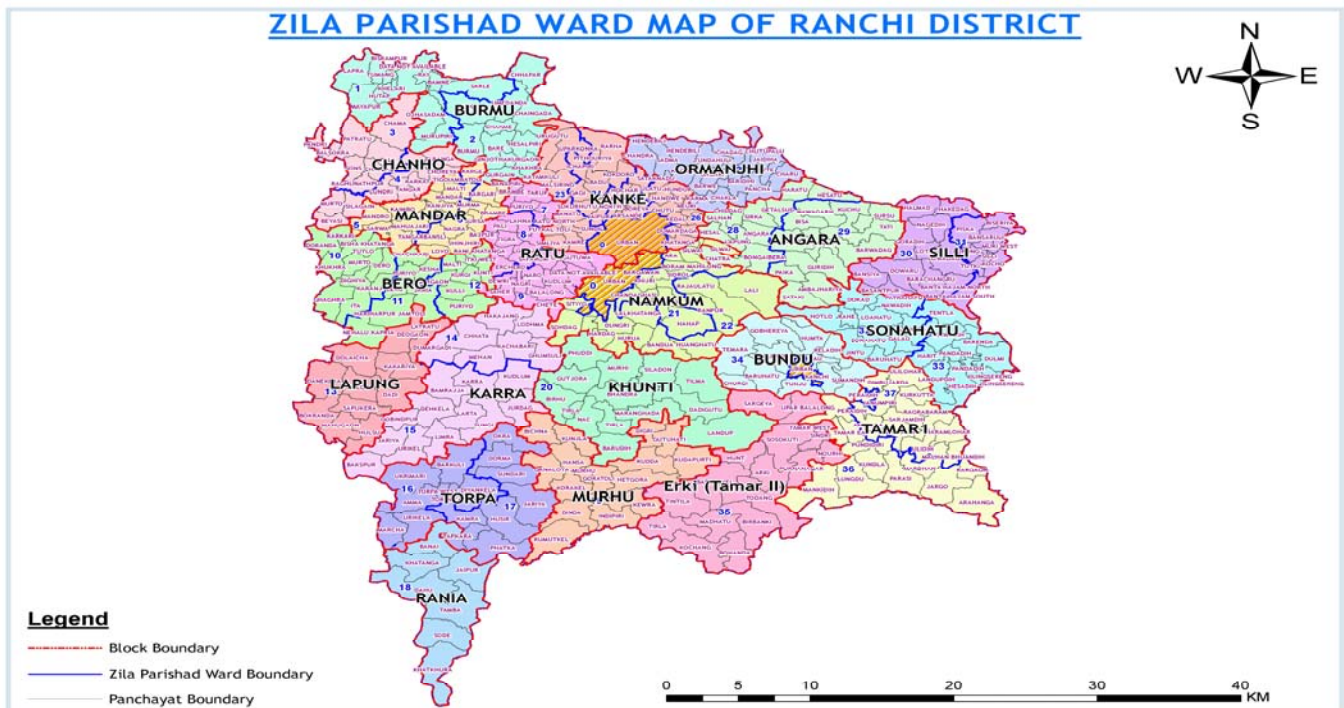
Ranchi district is one of the oldest districts of erstwhile Bihar and is the capital city of the Indian state of Jharkhand. Ranchi was the centre of the Jharkhand movement for a separate state for the tribal regions of South Bihar. There are 20 Blocks and 384 panchayats. Geographical area of the district is 785.25 thousand hectares. A normal rain fall during monsoon is 1100 m.m., post monsoon 98 m.m, winter rain 64.5m.m and pre monsoon is 120.7m.m.

There were two subdivision viz. Ranchi sadar & Khunti upto 2002-03, during 2003-04 Khunti subdivision has been bifurcated into two i.e. Khunti and Bundu subdivision. New Khunti has become a separate district. Ranchi sadar Subdivision has 11 Blocks and Bundu subdivision has three Blocks. Bundu subdivision comes under Ranchi district.

Boundary District	West	North	East	South
	Palamau, Lohardaga, Gumal & Simdega	Chatra & H. Bag.	W. Bengal & Saraikela district	Saraikela & W. Singhbhum

Administrative Classification, nos.	Sub-division	Block	Panchayat	Village
	2	20	370	2170

There are five Towns in the district namely Ranchi, Khunti, Bundu, Muri and Khelari.



The district may be divided into two plateaus. The first of these plateaus comprising greater part of the district includes nearly the whole of sadar Sub-division and western part of Khunti Sub-division. The Second and the lower plateaus consist of the extreme eastern and southern portion of the district.

The mean daily maximum and minimum temperature varies between 29°C and 18°C respectively. The average annual rainfall is about 1500mm of which 80% precipitates during the South West monsoon. During the current century, it has only in three years that the rainfall in the district was less than 80% of the normal. During the year the rainfall was delayed but later on it was rained and reached to the average rainfall.

The district is characterized by undulating topography. Its soil is red, Yellow, Light grey and acidic in nature.

The district has a population of 27, 83,577 out of which rural population is 72.13%. The tribal population account for 45.7% and scheduled caste about 5.3%. Literacy is at 65.69%. Of the rural population 57.16% is Tribal.

The total geographical area of the district is 7,59,250 hectares. Net area shown is 276091 hectares. Area under double crop is 6%. The forest cover is about 18% of the total geographical area. Mono cropping is the mainstay due to inadequate development of irrigation. Now, of course, it is set to follow a different trend slowly.

Out of total operational holdings of 2,44,073 in the district 72% are owned by small and marginal farmers accounting 24% of the total geographical area. Forty eight percent of the small and marginal farmers belong to tribal community. The average size of holding of small and marginal farmers is 0.62 ha.

A major thrust has been made during the year 1989-90 by launching the river lift irrigation scheme viz. Subarnarekha Scheme. There has been tremendous progress in construction of dug-wells under Jaldhara and Million wells scheme. Simultaneously, Pump sets have also been financed year after year. As per estimates more than 75,000 dug wells have been constructed and about 85% of these dug wells have been provided with pump sets. The latest figures are yet to come. However as per 1991 Census, the net irrigated area is 36,620 ha., Which is 14% the net cultivated area. Due to priority to Dug well since 1990-91, the area under dug wells has definitely included many folds.

As the run off in the district is very high, there is very good scope to tap this run off by check dams. According to a study total utilizable ground water irrigation potential is 106898 ha. Utilized ground water irrigation potential 19051 ha. And balance ground water irrigation potential 87,847 ha. Hence the scope for feasible dug well is good.

Agriculture in the Ranchi district is characterized by mono cropping, the main crop being paddy. Other kharif crops are Maize, Arhar, Urad, Moong, Niger and Rabbi crops are wheat, potato. However vegetable are grown extensively in some block (AES-I) of district. Main vegetable are Cauliflower, Cabbage, Tomato, Brinjal, Capsicum, Cucurbitaceous vegetables, Chilly. Un-seasonal vegetables are also grown on large scale in the District.

A. Administrative Divisions:

1	No. of sub division	02
2	No. of taluka / block	20
3	No. of town	04
4	No. of panchayat samiti	--
5	No. of gram panchayat	319
6	No. of inhabited villages	2145
7	No. of uninhabited villages	--
8	Total no. of villages	2145

B. Location of the District Ranchi:-

Longitude, East	Between	84° 27'00"	to	85° 21'03"
Latitude, North	Between	23° 40'44"	to	23° 38'45"

Boundary	West	North	East	South
District	Palamau, Lohardaga, Gumal&Simdega	Chatra & H. Bag.	W. Bengal & Saraikela district	Saraikela & W. Singhbhum

(Figures in '000ha)

Rural Area (ha) Census 2001	Urban Area (ha) Town directory, 2001	Total Area (ha) Census 2001	Geographical Area (ha) Surveyor General
7.475	0.10479	7.58250	7.59250

Department of Statistics DSO., Ranchi.

Administrative Classification, Nos	Sub-Division	Block	Panchayat	Village
	2	20	370	2170

C. Demography

Total Population as per 2001 Census		27,83,577
i.	Male	14,36,423
ii.	Female	13,47,154
iii.	Rural	15,90,580
iv.	Urban/semi-urban	6,14,454
v.	Scheduled Castes	1,16,089
vi.	Scheduled Tribes	10,07,847
vii.	Male-Female ratio	938 females per 1000 males

D. Block wise Male, Female and sex ratio:

Block	Total Male	Total Female	Total Population	Sex Ratio (F/1000male)
Kanke	84034	78919	162953	939
Ratu	64244	62132	126376	967
Mander	50063	48677	98740	972
Chanho	42742	41118	83860	962
Bero	66683	65030	131713	975
Burmu	52170	48889	101059	937
Lapung	26608	26725	53333	1004
Ormanjhi	39031	37127	76158	951
Angara	52007	51148	103155	983
Namkum	53247	50639	103886	951
Silli	49644	47749	97393	962
Bundu	27073	26481	53554	978
Tamar	57843	56272	114115	973
Sonahatu	48030	47381	95411	986
Khunti	31793	31838	63631	1001
Murhu	36629	36057	72686	984
Arki			67559	975
Rania	16767	17068	33835	1018
Torpa	38327	38863	66773	1014
Karra	45305	45531	90836	1005

Source :- Census

E. Rural population of the district:

Block	Number	% of Rural Population to total population
Kanke	162953	10.24
Ratu	97179	6.18
Mander	98740	6.20
Chanho	83860	5.20
Bero	131713	8.28
Burmu	143876	9.04
Lapung	53333	3.35
Ormanjhi	62514	3.93
Angara	102990	6.47
Namkum	91451	5.74
Silli	94347	5.93
Bundu	61917	3.89
Tamar	99132	6.23
Sonahatu	94990	5.97
Khunti	84033	5.28
Murhu	62696	3.94
Arki	67559	4.24
Rania	32105	2.01
Torpa	66773	4.19
Karra	90836	5.71

Source :- Census

F. Panchayats and Villages in district Ranchi.

Sl.No.	District/Block	No. of Panchayat	No. of Villages
1	Ranchi Town	-	38
2	Kanke	27	102
3	Ratu	20	83
4	Mander	16	69
5	Chanho	13	67
6	Bero	22	114
7	Burmu	24	98
8	Lapung	09	79
9	Ormanjhi	13	91
10	Angara	19	92
11	Namkum	18	111
12	Silli	19	113
13	Bundu	9	90
14	Tamar	20	129
15	Sonahatu	17	101

www.jharkhand.gov.in/village_profile

G. Rural Health Facility in the District:-

Type of Health Centre	No.
Maternity homes	8
Family Welfare Centre	14
TB Centre	6
Other Centre	10
Subsi. Medical Practitioner	1
Regd. Private Practitioner	82
Nursing Home	15
Allopathy Dispensary	35
Primary Health Sub-Centre	36
Health Centre	18
Child Welfare Centre	20
Mat. & Child Welfare Centre	124
Hospital	64
Primary Health Centre	22
Ayurvedic Dispensary	5
Homoeopathic Dispensary	6

www.jharkhand.gov.in/village_profile

H. Postal Connectivity of the District:

Block	Pin Code
Kanke	834006
Mander	835214
Chanho	835214
Bero	835202
Lapung	835244
Namkum	835221
Silli	835102
Bundu	835204
Tamar	835225
Sonahatu	
Khunti	835210
Murhu	835216
Arki	
Rania	
Torpa	835227
Karra	835209

Hade post Ranchi.

I. Classification of Workers of the District:-

	Male	Female	Total
Main Worker	361190	162702	523892
Non Worker	450338	539156	989494
Marginal Worker	104819	189038	293857
Total work force	466009	351740	817749
Cultivator	270268	201927	472495
Agril. Labour	108025	148831	256856
Other	96659	27103	123762

www.jharkhand.gov.in/village_profile

J. Land Use pattern of the District (In ha)

Block	Total	Forest	Not available for cultivation	Gross potential for agriculture	Culturable waste including pasture Graze	Net potential for agriculture
Kanke	3.4200	5134.38	5971.26	12403.52	3401.21	9002.31
Ratu	2.6147	1075.95	2612.89	13427.75	5358.81	8068.94
Mander	2.3822	1605.94	2727.50	10025.96	970.85	9055.11
Chanho	2.7285	7043.18	1929.85	10790.04	1621.00	9169.04
Bero	3.8764	6510.80	5706.56	11489.87	3957.50	7532.37
Burmu	4.5111	16279.75	1111.73	11064.42	498.19	10566.23
Lapung	3.0086	3674.91	4094.98	14571.04	238.33	14332.71
Ormanjhi	2.2812	6247.37	3093.29	8614.98	2887.45	5727.53
Angara	4.4491	1383.15	6518.81	16511.93	4021.92	12490.01
Namkum	4.6178	7692.63	6806.55	10180.56	3261.99	6918.57
Silli	3.2093	8918.12	4922.85	8022.29	1566.08	6456.21
Bundu	2.6419	4377.50	322.77	10323.87	974.52	9349.35
Tamar	5.1349	11446.29	4400.02	12546.00	3457.11	9088.89
Sonahatu	3.7658	2236.60	5006.92	9066.73	6739.90	2326.83
Khunti	4.7279	4159.06	7505.33	88693.92	5129.21	83564.71
Murhu	4.0295	6055.74	4828.44	10025.96	3807.61	6218.35
Arki	5.1497	19831.90	-	6504.65	-	6504.65
Rania	2.6478	4224.21	3954.30	9346.66	2526.55	6820.11
Torpa	4.4522	3771.71	4007.54	11977.76	10202.85	1774.91
Karra	5.0745	6849.48	5954.28	17267.19	4495.03	12772.16

District Statistical Office, Ranchi

K. Actual Land Classification of the District.

Class of Farmer	Area in hectare
Total Geographic area	7,58,250.00
Total Rural area	10,749.00
Total Forest area	2,81,628.00
Area not available for agriculture	54,662.18
Area under non-Agricultural use	64,007.81
Barren & Uncultivable Land	52,011.60

District Statistical Office, Ranchi

L. Land Holding pattern

Class of Farmer	Number	Percentage
Marginal farmers, holding less than 1 ha	135751	55.62
Small farmers, holding 1 ha to less than 2 ha	39914	16.35
Medium farmer, holding 2 ha to less than 4 ha	36444	14.93
Large farmer, holding 4 ha to less than 10 ha	25928	10.62
Extra large farmer, holding more than 10 ha	6036	2.48

Source :- NABARD, Ranchi.

M. Different Categories of Farm Households in Block.

S.N.	Size of farm	Tamar	Sonahatu	Bundu	Chanho	Lapung	Angara	Ormanjhi
1	0 - 1 ha.	8050	8550	8560	7850	8950	7800	8500
2	1.1 – 2 ha.	450	410	410	420	350	400	432
3	2.1 – 5 ha.	1480	2110	2140	2350	2250	2120	2830
4	5.1 -10 ha.	180	300	240	300	280	400	260
5	More than 10 ha.	59	32	42	47	32	41	48

S.N.	Size of farm	Ratu	Bero	Burmu	Kanke	Mandar	Namkum	Silli
1	0 - 1 ha.	8650	7652	5894	8746	5486	6595	6550
2	1.1 – 2 ha.	350	450	410	350	250	430	450
3	2.1 – 5 ha.	2120	2140	2150	1920	1680	2240	1640
4	5.1 -10 ha.	230	450	250	310	380	290	320
5	More than 10 ha.	46	45	62	32	24	38	58

N. Irrigated area (ha)

1.	Net Irrigated Area	-	36620.00 ha.
2.	Source of Irrigation		
	By Channels	-	8082.00 ha.
	By Well	-	21445.00 ha.
	By Pond	-	1134.00 ha.
	Other Sources	-	5959.00 ha.

Source :- NABARD, Ranchi.

O. Block Wise River System

Sl. No.	Block	River Flowing Across
1	Angara	Swarn Rekha, Ganga Nala, Raru Nala, Kuch Nala.
2	Arki	Kanchi, Karkari (Lomal), Dogar Nala.
3	Bero	Chapchapi, Rani Khatanga Nala, Paras Nala.
4	Bundu	Kanchi, Korda, Ariya, Resa.
5	Burmu	Koyal, Sitte.
6	Chanho	Swarna Rekha, Laksti, Jumar.
7	Kanke	Chata, Hasla, Tirma, Jumar, Potpoto.
8	Karra	Lamchi, Tojna Nala.
9	Khunti	Kanchi, Tojna Nala.
10	Lapung	Karo, Kami, Jhingi.
11	Mandar	Bilgaon, Koyal, Bajna Bear.
12	Murhu	Banai, Kaltu, Tajna Nala.
13	Namkom	Swarna Rekha.
14	Ormanjhi	Sophi.
15	Rania	Koyal, Kano.
16	Ratu	Koyal, Lokel Nala
17	Silli	Swarna Rekha.
18	Sonahatu	Swarna Rekha, Ranu, Kanchi.
19	Tarmr	Kanchi, Jumar.
20	Torpa	Koyal.

Source :- NABARD, Ranchi.

P. Season Wise Crops Sown (ha.) 2008

Crops	Kharif	Rabi	Summer	Total
Paddy	2,52,923	--	--	2,52,923
Maize	6,199	07	--	6,206
Pulses	38,914	5,857	--	44,771
Oilseeds	4,722	4,234	--	8,956
Vegetables	6,022	16,626	5,164	27,812
Wheat	--	4,953	--	4,953
Total :-	3,08,780	31,677	5,164	3,45,621

DAO., Ranchi

Q. Crop Productivity during last Three Years (Secondary Information)

Sl. No.	Crop	Conditions	2004-05 (q/ha)	2005-06 (q/ha)	2006-07 (q/ha)
1	Paddy – S	Rainfed	21	26	22
2	Paddy – K	Rainfed	20	24	26
3	Wheat – T/R	Irrigated	17	17	21
4	Wheat – late	Irrigated	12	14	17
5	Pulses – K	Rainfed	10	11	11.50
6	Pulses – R	Rainfed	12	12.50	13.75
7	Other pulses	Rainfed	9	10.50	12.75

Gene Campaign (RKVY)

R. Animal Wealth of the district.

Animal	Number in Thousands	% in State
Cattle	671.17	8.76
Buffalo	155.0	11.59
Goat	642.75	12.77
Poultry	2105.00	11.46
Pig	127.03	11.46
Sheep	81.40	11.97

Gene Campaign (RKVY)

S. Implements, Infrastructure and Institutions in the District.

S.N.	Particulars	Tractors	Tube Wells	Drip/Sprinkler	Other Implements
1	Tarmr	28	49	12	217
2	Bundu	98	111	28	318
3	Sonahatu	76	90	18	309
4	Angara	72	56	9	210
5	Bero	42	56	14	228
6	Burmu	21	102	16	217
7	Kanke	54	78	13	219
8	Mandar	76	94	9	276
9	Namkum	77	26	7	218
10	Silli	77	52	14	296
11	Chanho	102	98	14	317
12	Lapung	78	96	18	276
13	Ormanjhi	105	78	24	301
14	Ratu	76	90	18	309

Gene Campaign (RKVY)

T. Area, Production and Productivity of Crops in Ranchi.

Agricultural Crops

Crop - Paddy

Year	Area (ha)	Total Production (In tones)	Average Yield (Kg/ha)
1999-00	1,96,996	2,61,845	1,329
2004-05	1,59,200	2,16,730	1,361

Crop – Wheat

Year	Area (ha)	Total Production (In tones)	Average Yield (Kg/ha)
1999-00	2,574	4,310	1,674
2004-05	2,790	4,140	1,485

Crop – Maize

Year	Area (ha)	Total Production (In tones)	Average Yield (Kg/ha)
1999-00	3,648	5,572	1,500
2004-05	9,048	11,762	1,300

Crop – Pigeon pea

Year	Area (ha)	Total Production (In tones)	Average Yield (Kg/ha)
1999-00	1,972	2,454	1,244
2004-05	8,028	6,422	800

Crop –pea

Year	Area (ha)	Total Production (In tones)	Average Yield (Kg/ha)
1999-00	1,247	892	715
2004-05	2,000	2,319	1,157

Crop –Mustard

Year	Area (ha)	Total Production (In tones)	Average Yield (Kg/ha)
1999-00	361	261	723

Gene Campaign (RKVY)

U. Area under Horticulture crops in Ranchi District. (Acres)2006.

Fruit	Mongo	2351.44
	Jack Fruit	177.84
	Guava	129.89
	Banana	0.36
	Litchi	36.15
	Others	204.41
Vegetables	Potato	5892
	Onion	2137
	Peas	2017.56
	Ginger	2733
	Tomato	1893.86
	Cauliflower	2762
	Cabbage	1952
	Other	9500
Spices	Coriander	43.25
	Ginger	83.85
	Garlic	317.81
	Chilli	101.69

Gene Campaign (RKVY)

V. Area, Production and Productivity of Crops in Ranchi.

Horticulture Crops**Crop - Cauliflower**

Year	Area (ha)	Total Production (In tones)	Average Yield (qu/ha)
1999-00	2762	44192	16.00

Crop – Cabbage

Year	Area (ha)	Total Production (In tones)	Average Yield (qu/ha)
1999-00	1952	31232	16.00

Crop – Potato

Year	Area (ha)	Total Production (In tones)	Average Yield (qu/ha)
1999-00	5892	52894	8.98

Crop – Tomato

Year	Area (ha)	Total Production (In tones)	Average Yield (qu/ha)
1999-00	1817	36340	20.00

Crop – Brinjal

Year	Area (ha)	Total Production (In tones)	Average Yield (qu/ha)
1999-00	2733	54660	20.00

Crop – Chili

Year	Area (ha)	Total Production (In tones)	Average Yield (qu/ha)
1999-00	1933	23196	12.00

Crop – Others

Year	Area (ha)	Total Production (In tones)	Average Yield (qu/ha)
1999-00	2258	27096	12.00

Crop – Cabbage

Year	Area (ha)	Total Production (In tones)	Average Yield (qu/ha)
1999-00	21158	329535	15.57

Gene Campaign (RKVY)

W. GROUND WATER RESOURCES

Sl. No.	Assessment Unit/District	Command/non-Command Total	Net Annual Ground Water Availability	Existing Gross Ground Water Draft for Irrigation	Existing Gross Ground Water Draft for Domestic and Industrial Water Supply	Existing Gross Ground Water Draft for All Uses (11 = 12)	Allocation for Domestic, and Industrial requirement Supply up to Next 25 Years	Net Ground Water Availability for Future Irrigation Development (10-11-14)	Stage of Ground Water Development {(13/10)*100} (%)
	RANCHI								
1	Kanke	41425	3705	464	1400	1864	2102	1139	50
2	Ratu	20100	2418	1187	202	1389	304	928	57
3	Mander	20300	2137	987	156	1143	234	917	53
4	Chanho	20400	1878	528	132	659	198	1152	35
5	Bero	34050	2909	489	207	695	311	2110	24
6	Burmu	37390	2965	383	192	575	289	2294	19
7	Lapung	20000	1695	565	84	649	126	1004	38
8	Ormanjhi	18400	1619	386	120	506	180	1053	31
9	Angara	33900	2963	586	162	748	243	2134	25
10	Namkum	33400	2855	230	171	402	257	2368	14
11	Silli	21100	1946	242	163	404	244	1461	21
12	Bundu	19000	1712	162	99	261	148	1402	15
13	Tamar	34225	2804	133	180	312	270	2402	11
14	Sonahatu	26000	2632	217	150	367	225	2189	14

Average Monthly Rainfall (mm) – Ranchi District.

Jan	Feb	Mar	Apr	May	Jun	Jul	Aug	Sep	Oct	Nov	Dec	Total
17	27.8	26.4	24.5	51.1	213.5	351.9	316.6	257.5	80.3	13.4	8.6	1388.6

Rain Fall Pattern Ranchi District.

SEASON	NORMAL	D.A.O., Ranchi		
		2006-07	2005-06	2004-05
Monsoon	1500.6	1110	1118	896.9
Post Monsoon	610	422	511	712
Winter	110	129	210	128
Pre Monsoon	222	310	322	298

Gene Campaign (RKVY)

V. Block Wise Rainfall Distribution for Five Years
Block – Kanke

Month	January	February	March	April	May	June	July	August	September	October	November	December
Year	1	2	3	4	5	6	7	8	9	10	11	12
2004						249.8	256.6	360.6	257.6	173.0		
2005						109.3	395.8	331.0	192.3	38.2		
2006					169.0	247.0	636.1	407.4	333.7	45.2		
2007	0.0	121.2	37.0	37.0		145.6	364.7	323.1	301.4	10.6	0.0	0.0
2008	0.0				60.7	396.3	365.4	250.6	123.4	34.0		

Block – Ratu

Month	January	February	March	April	May	June	July	August	September	October	November	December
Year	1	2	3	4	5	6	7	8	9	10	11	12
2004							153.3	350.1	195.7	140.3		
2005										68.9		
2006					125.8	231.8	481.9	466.3	249.7	57.7		
2007						130.7	321.2	308.8	300.2	24.5	0.0	0.0
2008	0.0	0.0	1.3	0.0	4.0	280.4	490.3	379.0	150.0	17.1		

Block – Mander

Month	January	February	March	April	May	June	July	August	September	October	November	December
Year	1	2	3	4	5	6	7	8	9	10	11	12
2004						280.8	325.3	445.3	322.8	163.4		
2005						80.1	276.0	376.4	207.4	9.4		
2006					277.2	421.6	547.0		421.2			
2007						159.5	467.2	579.1	568.2	28.4	0.0	0.0
2008	0.0	0.0		0.0			500.6	320.3	106.0	20.0		

Block – Chanho

Month	January	February	March	April	May	June	July	August	September	October	November	December
Year	1	2	3	4	5	6	7	8	9	10	11	12
2004												
2005									174.2	36.2		
2006					150.0	136.0	429.0	335.0	220.8	7.0		
2007	0.0	117.0	89.0	-	-	179.0	471.6	370.0	259.2	3.2		
2008	0.0	0.0	-	0.0	0.0	473.2	581.4	330.4	145.0	64.4		

Block – Bero

Month	January	February	March	April	May	June	July	August	September	October	November	December
Year	1	2	3	4	5	6	7	8	9	10	11	12
2004												
2005									247.0	17.2		
2006						97.4	549.0	303.2	164.5	18.4		
2007	-	95.4	15.6	11.0		81.7	278.2	368.8	342.2	115.4	12.4	
2008	0.0	0.0	13.5	0.0	22.6	243.7	308.9	113.8	70.7	12.4		

Block – Burmu

Month	January	February	March	April	May	June	July	August	September	October	November	December
Year	1	2	3	4	5	6	7	8	9	10	11	12
2004							1.0	164.0	99.0	0.0		
2005									160.0			
2006						99.2	305.8	391.8	209.0	16.4		
2007						87.0	262.6	253.6	269.5	42.4		
2008	0.0	0.0		0.0	0.0	322.4	592.6	258.2	139.2	18.0		

Block – Lapung

Month	January	February	March	April	May	June	July	August	September	October	November	December
Year	1	2	3	4	5	6	7	8	9	10	11	12
2004						176.4	90.0	180.6	42.0			
2005						-	132.0	319.2	117.4			
2006						100.1	256.0	188.5	155.5			
2007					49.8	138.5	180.0	214.2	270.2	42.4	0.0	0.0
2008			32.4	0.0	39.0	313.8	369.2	212.2	92.4	6.8		

Block – Ormanjhi

Month	January	February	March	April	May	June	July	August	September	October	November	December
Year	1	2	3	4	5	6	7	8	9	10	11	12
2004												
2005									101.1	20.0		
2006						18.2	619.7	380.9	261.8	10.0		
2007			33.4	17.2	48.9	115.4	517.9	321.3	406.5	22.6	0.0	2.2
2008	6.0	0.0	20.5	0.0	75.0	412.2	342.5	258.7	215.5	4.6		

Block – Angara

Month	January	February	March	April	May	June	July	August	September	October	November	December
Year	1	2	3	4	5	6	7	8	9	10	11	12
2004						126.8	189.4	480.9	80.6	109.1		
2005						206.2	264.8	331.8	252.4	31.2		
2006					71.0	167.4	441.0	292.9	306.4	0.0		
2007						118.9	317.8	230.0	238.0	78.5	0.0	0.0
2008	15.0	0.0	5.2	0.0		-	159.2	246.8	221.6	32.7		

Block – Namkum

Month	January	February	March	April	May	June	July	August	September	October	November	December
Year	1	2	3	4	5	6	7	8	9	10	11	12
2004						204.8	194.4	506.8	165.8			
2005						153.4	335.6	235.7	239.5	31.2		
2006					137.8	307.4	437.9	375.3	417.1	22.8		
2007					42.2	170.5	355.9	378.7	379.0	28.3	0.0	0.0
2008	0.0	0.0	0.0	0.0		232.0	519.9	309.3	227.7	13.0		

Block – Silli

Month	January	February	March	April	May	June	July	August	September	October	November	December
Year	1	2	3	4	5	6	7	8	9	10	11	12
2004						102.04	196.5	331.2	146.2	117.73		
2005						122.8	230.3	318.0	195.4	81.2		
2006					253.9	276.2	332.1	242.7	254.5	12.7		
2007	0.0	43.8	35.6	0.0	19.0	119.3	582.3	383.4	373.0	12.0	0.0	0.0
2008	0.0	0.0	0.0	0.0	6.2	239.2	870.2	172.6	396.5	12.2		

Block – Bundu

Month	January	February	March	April	May	June	July	August	September	October	November	December
Year	1	2	3	4	5	6	7	8	9	10	11	12
2004							0.0	254.1	139.5	106.7		
2005						106.5	217.1	316.5	130.2	13.0		
2006					196.1	224.5	556.1	433.9	309.2	180.0		
2007						59.8	245.6	339.9	329.0	150.3	0.0	0.0
2008	0.0	0.0		0.0	7.1	383.6	466.2	124.0	178.4	0.0		

Block – Tamar

Month	January	February	March	April	May	June	July	August	September	October	November	December
Year	1	2	3	4	5	6	7	8	9	10	11	12
2004												
2005							207.2	200.9	239.9	0.0		
2006						286.90	564.4	255.2	324.1	0.0		
2007	2.1	48.9	46.8	18.6	41.6	161.2	377.8	290.0	338.8	20.3	0.0	0.0
2008	16.3	0.0	0.0	0.0		26.0	430.8	146.9	113.6	0.0		

Block – Sonahatu

Month	January	February	March	April	May	June	July	August	September	October	November	December
Year	1	2	3	4	5	6	7	8	9	10	11	12
2004												
2005							194.5	300.0	130.5	0.0		
2006					0.0	106.3	302.4	491.4	311.7	57.2		
2007	0.0	44.5	20.0		9.0	59.2	376.3	233.9	1108.6	58.0	0.0	0.0
2008	0.0	0.0	0.0	0.0	3.5	483.6	476.8	238.0	121.0	6.0		

Block – Khunti

Month	January	February	March	April	May	June	July	August	September	October	November	December
Year	1	2	3	4	5	6	7	8	9	10	11	12
2004						21.11				151.4		
2005									209.0	25.0		
2006					89.0	118.2	513.7	384.6	332.0	60.0		
2007	14.4	12.0	11.8	15.0	119.0	113.7	421.8	297.2	403.2	41.6	0.0	0.0
2008	0.0	0.0	0.0	2.0	43.0	345.4	394.7	398.2	253.4	13.6		

Block – Murhu

Month	January	February	March	April	May	June	July	August	September	October	November	December
Year	1	2	3	4	5	6	7	8	9	10	11	12
2004						104.0	158.7	381.4	33.9			
2005						28.1	173.7	490.5	319.4			
2006					126.0	116.4	860.0	953.8	613.3	83.5		
2007				25.9		101.2	293.7	284.5	276.7	0.0	0.0	0.0
2008	10.0	0.0	21.8	5.8	68.9	382.4	618.0	203.2	136.8	14.6		

Block – Arki

Month	January	February	March	April	May	June	July	August	September	October	November	December
Year	1	2	3	4	5	6	7	8	9	10	11	12
2004						106.8	97.8	315.6	129.8	64.5		
2005						137.6	207.8	321.8	188.8	83.4		
2006					144.8	223.6	509.0	376.2	241.0	57.0		0.0
2007		42.4				127.8	278.7	348.0	429.2	55.2	3.8	
2008	8.8	0.0	5.9	0.0		448.4	399.2	480.6	220.8	41.6		

Block – Rania

Month	January	February	March	April	May	June	July	August	September	October	November	December
Year	1	2	3	4	5	6	7	8	9	10	11	12
2004							122.0					
2005									19.35	0.0		
2006					0.0	98.5	495.3	379.2	231.4	10.4		
2007	1.2	25.4	38.6	30.0	24.6	149.0	473.2	388.6	228.4	0.0	0.0	0.0
2008	4.2	0.0	3.2	13.6	48.0	391.4	499.5	286.5	164.6	36.0		

Block – Torpa

Month	January	February	March	April	May	June	July	August	September	October	November	December
Year	1	2	3	4	5	6	7	8	9	10	11	12
2004									10.0	142.8		
2005									350.0	111.0		
2006					122.0	199.5	448.4	238.0	192.3	68.5		
2007					11.0	125.6	341.9	307.0	380.0	86.0	0.0	0.0
2008	0.0	0.0	0.0	0.0	12.0	422.0	401.0	194.0	192.3	10.0		

Block – Karra

Month	January	February	March	April	May	June	July	August	September	October	November	December
Year	1	2	3	4	5	6	7	8	9	10	11	12
2004												
2005								0.0	5.0	0.0		
2006					8.1	130.0	226.3	292.4	170.5	31.3		
2007						104.0	441.2	253.6	359.4	50.6	0.0	0.0
2008	0.0	0.0	0.0	0.0	41.6	694.8	509.4	292.0	230.0	41.6		

DAO. Ranchi

X. Public Private Partnership Initiatives in the Ranchi District (EXPORT) Weekly.

Sl. No.	Type of Partnership	Partners					Activity undertaken
		I	II	III	IV	V	
1	Paddy	Farmers (Producer)	Middle men	Whole Seller	Retailer	Consumer	Purchasing & Supply
2	Potato	Farmers (Producer)	Middle men	Whole Seller	Retailer	Consumer	Purchasing & Supply
3	Vegetable	Farmers (Producer)	Middle men	Whole Seller	Retailer	Consumer	Purchasing & Supply
4	Pea	Farmers (Producer)	Middle men	Whole Seller	Retailer	Consumer	Purchasing & Supply
5	Goat	Farmers (Producer)	Middle men	Whole Seller	Retailer	Consumer	Purchasing & Supply
6	Poultry	Farmers (Producer)	Middle men	Whole Seller	Retailer	Consumer	Purchasing & Supply

Y. Existing Public – Private- Partnership (PPP) in Ranchi District.

Sl. No.	Type of Enterprises	Types of Partnerships	Activities Undertaken	Volume	Value of Trade
1	Vegetable Production	Pvt-Pvt(Farmers and dealer)	Vegetable Production	4500 ha.	2 crore
2	Seed production	Pvt-Pvt(Farmers and dealer)	Rice seed production	50ha	4 lakh
3	Poultry	Pvt-Pvt(Farmers to middle men)	Local cock	10,000/day	
4	Goat	Pvt-Pvt(Farmers to middle)	Goat purchase for meat		3 lack/week
5	Organic manure production	Pvt-Pvt(Farmers and Farmers)	Organic manure units vermin compost production unit	1500MT	
6	Value addition	Pvt-Pvt(Farmers and NGO)	Preparing of Maize, tomato production		10 lakh
7	Organising Kisan mela (Farmers Scientist interaction)	Pvt-Pvt(Farmers & Treaders)	Promotion of Hybrid Paddy & Vegetable.		

Gene Campaign (RKVY)

Z. Soil of Ranchi District

Geologically the area is comprised with Archean granites, gneisses and schists. Soil is the base for terrestrial life supporting system. The land located of the upper slope is called Tanr land (Up land) and the land following it is called Don land (Low land). The soils of upland and medium land are red and lateritic, highly permeable, coarse textured, shallow depth with low base saturation, cation exchange and water retention capacity, shallow depth with organic matter with low nitrogen status, deficient in phosphorus. Deficiency of potassium is on increase. The lowland Soils have excessive, which restricts tillage operation and thus fields remain fallow in winter season. In this situation, surface-seeding technique provides an elbow space for growing wheat, eliminating tillage. Crack formation on surface layers with depletion of moisture is usual feature of lowland soil.

General Characteristics of Soil.

Characteristics	Upland	Medium Land	Low land
Colour	Red or Brown red	Yellow of Yellowish	Grey of Greyish
Texture	Light textured (Sandy loam)	Medium textured (Sandy clay loam)	Heavy textured
Drainage	Well drained	Moderately drained	Poorly drained
Soil reaction	Low pH	Moderately acidic	Neutral pH
Soil fertility	Poor in organic carbon, Ca, Mg, N, P&S	Poor in organic carbon N, Ca, Mg.	Medium in N & organic carbon.

Taxonomy	Area (00ha)	% of TGA
Loamy –skeletal,mix,hyperthermic Lithic Ustorthents FineLoamy,mixed,hyperthermic Ultic Haplustalfs	354	4.60
Loamy, mixed, hyperthermic Lithic Ustorthents Fine,mixed ,hyperthermic Typic Rhodustalfs	134	1.74
Loamy,mixed,hyperthermicLithicUstorthents Fine loamy, mixed,hyperthermic Typic Haplustepts	85	1.10
Fine,mixed hyperthermic Typic Haplustepts Fine-Loamy, mixed ,hyperthermic Typic Haplustepts	4	0.05
Fine,mixed hyperthermic Typic Paleustalfs Fine ,mixed hyperthermic Typic Rhodustalfs	1800	23.38
Fine, loamy,mixed hyperthermic Typic Paleustalfs Fine-loamy ,mixed hyperthermic Typic Rhodustalfs	1316	17.10
Fine,mixed hyperthermic Typic Paleustalfs Fine-loamy ,mixed hyperthermic Typic Rhodustalfs	910	11.82
Loamy,mixed,hypothermic Lithic Haplustalfs Fine,mixed,hyperthermic Typic Paleustalfs	77	1.00
Fine Loamy,mixed,hypothermic Typic Paleustalfs Fine,loamy,mixed,hyperthermic Typic Haplustepts	256	3.33
Fine,mixed hyperthermic Rhodic Paleustalfs Fine-loamy ,mixed hyperthermic Typic Haplustalfs	835	10.85
Fine-loamy ,mixed hyperthermic Typic Haplustalfs Fine-loamy ,mixed hyperthermic Typic Haplustalfs	657	8.53
Coarse loamy ,mixed hyperthermic Typic Ustorthents Fine-loamy ,mixed hyperthermic Typic Paleustalfs	37	0.48
Fine-loamy ,mixed hyperthermic Typic Rhodustalfs Fine, loamy,mixed hyperthermic Typic Ustorthents	26	0.34
Fine ,mixed hyperthermic Aeric Endoaquepts Fine ,mixed hyperthermic Typic Haplustepts	345	4.48
Loamy-skeletal,mixed,hyperthermic Lithic Ustorthents Fine,mixed,hyperthermic Typic Rhodustalfs	293	3.81

Fine-,mixed hyperthermic Lithic Ustorthents Fine loamy,mixed hyperthermic Typic Haplustepts	190	2.47
Fine ,mixed hyperthermic Lithic Ustorthents Fine,mixed,hyperthermic Typic Paleustalfs	2	0.03
Fine ,mixed hyperthermic Lithic Ustorthents Fine ,mixed hyperthermic Typic Paleustalfs	11	0.14
Coarse loamy,mixed,hyperthermic Typic UstorthentsFine ,mixed,hyperthermic Typic Haplustalfs	108	1.40
Fine ,mixed hyperthermia Aeric Endoaquepts Fine ,mixed hyperthermiaTypic Haplustepts	35	0.46
Fine ,mixed hyperthermiaTypic Paleustalfs Fine loamy ,mixed, hyperthermic Ultic Haplustalfs	55	0.71
Miscellaneous	168	2.18
Total	7698	100.00

Source BAU

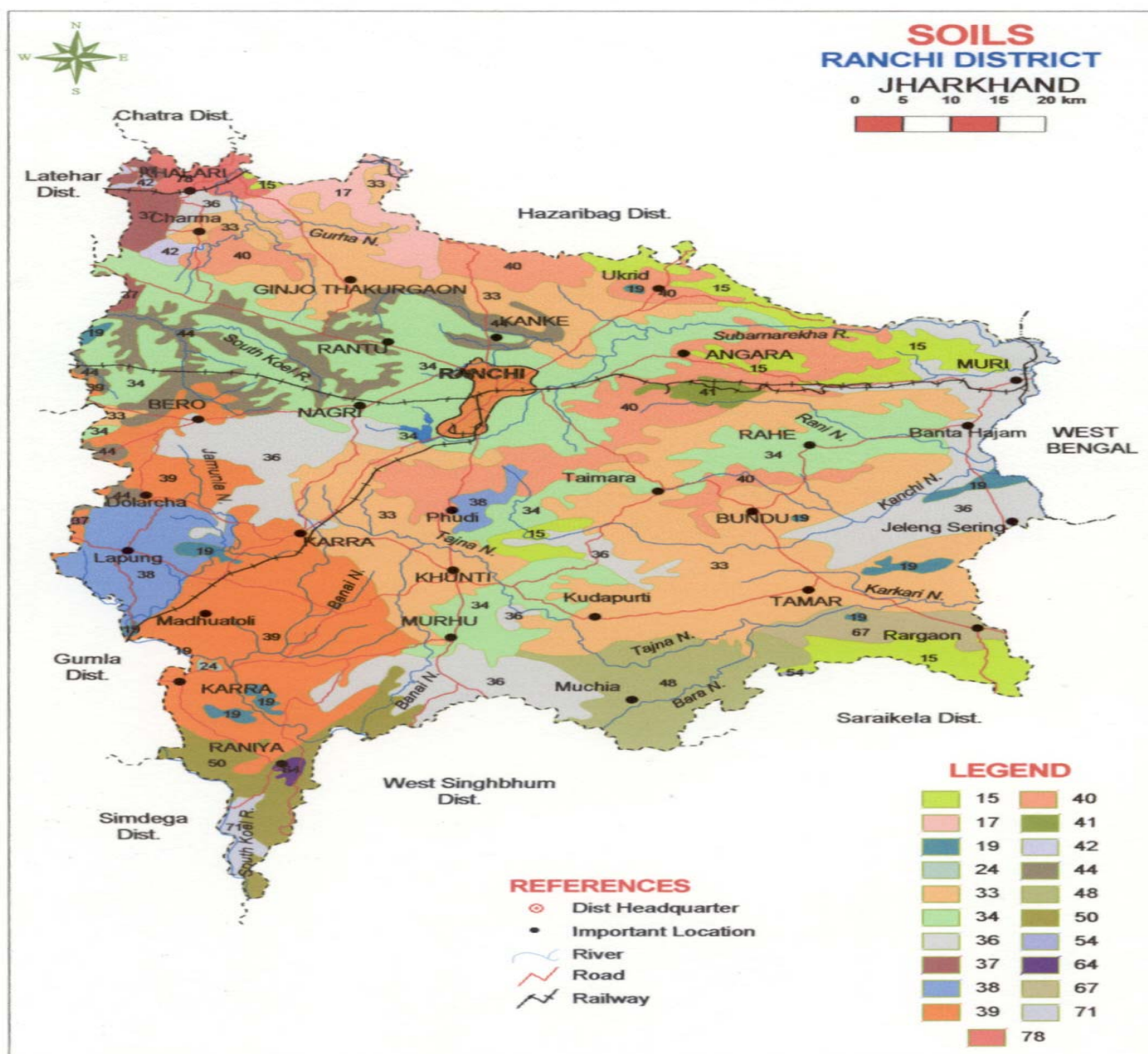


Fig. -1m

Soil pH

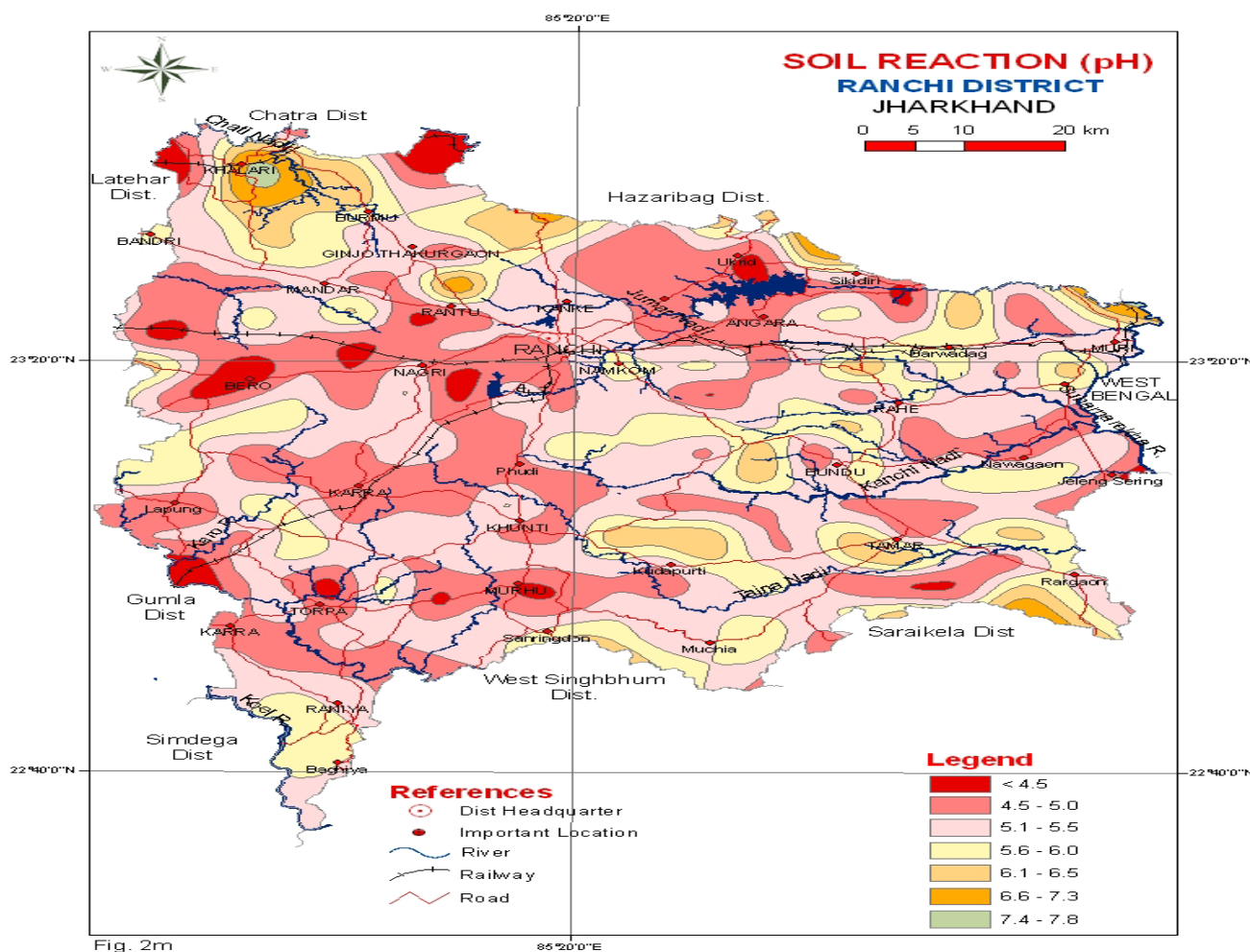
Soil pH an important soil property, which affects the availability of several plant nutrients. It is a measure of acidity and alkalinity and reflects the status of base saturation. The soils of the district have been grouped under seven soil reaction classes according to Soil Survey Manual (IARI, 1970).

The soil pH of district ranges from 4.2 to 7.6. The data reveals that majority of the area is acidic (96.4 % of TGA), in which 41.9 percent area is strongly acidic, 28.6 percent very strongly acidic, 18 percent moderately acidic, 5.2 percent slightly acidic and 2.7 percent extremely acidic in reaction. Soils of 1.2 percent area of the district are neutral whereas 0.2 percent area is slightly alkaline in reaction.

Soils under different reaction classes:-

Soil reaction	Area ('00ha)	% of the TGA
Extremely acidic (pH<4.5)	206	2.7
Very strongly acidic (pH 4.5 to 5.0)	2205	28.6
Strongly acidic(pH 5.1 to 5.5)	3226	41.9
Moderately acidic (pH 5.6 to 6.0)	1388	18.0
Slightly acidic (pH 6.1 to 6.5)	400	5.2
Neutral (pH 6.6 to 7.3)	90	1.2
Slightly alkaline (pH 7.4 to 7.8)	15	0.2
Miscellaneous	168	2.2
Total	7698	100.00

Gene Campaign (RKVY)BAU



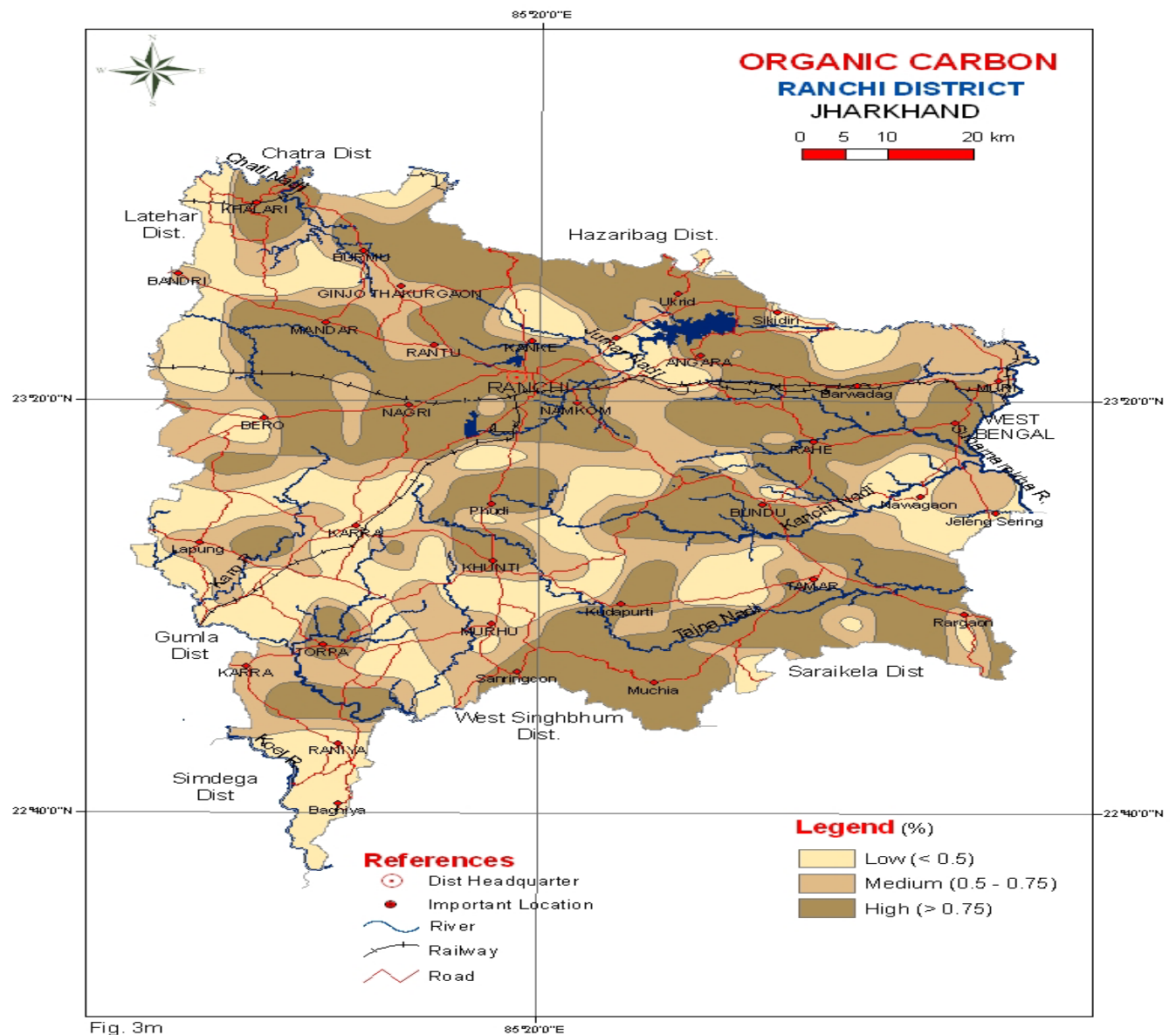
Organic Carbon

The organic carbon content in the district ranges from 0.14 to 3.76 %. They are mapped into three classes i.e., low (below 0.5%), medium (0.5 to 0.75%) and high (above 0.75%) 43.8 percent area of the district shows high organic carbon content. Medium and low organic carbon content constitute 28.7 and 25.3 percent area respectively.

Organic carbon status:-

Organic carbon	Area ('00ha)	% of the TGA
Low (below 0.50%)	1945	25.3
Medium (0.50-0.75%)	2211	28.7
High (above 0.75%)	3374	43.8
Miscellaneous	168	2.2
Total	7698	100.00

Gene Campaign (RKVY) BAU



Macronutrient

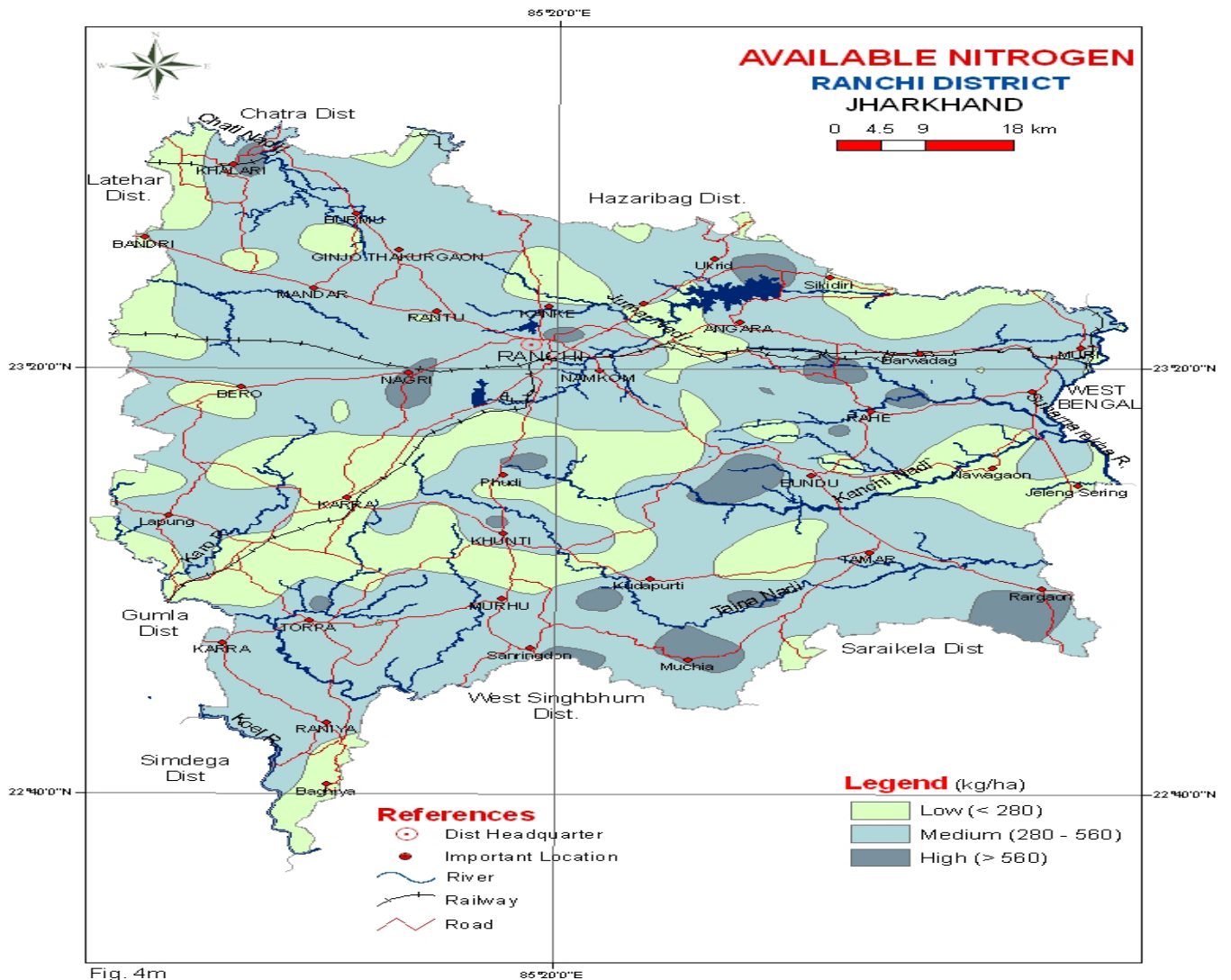
Available Nitrogen:-

Available nitrogen content in the surface soils of the district ranges between 109 and 638 kg/ha. Majority soils (67.2% of TGA) of the district have medium availability status of nitrogen (280-560kg/ha⁻¹) and soils of 26.1 percent area have low available nitrogen content (<280 kg/ha⁻¹)

Available nitrogen status in the surface soil.

Available Nitrogen (kg/ha ⁻¹)	Area ('00ha)	% of the TGA
Low (below 280)	2012	26.1
Medium (280-560)	5171	67.2
High (above 560)	347	4.5
Miscellaneous	168	2.2
Total	7698	100.00

Gene Campaign (RKVY) BAU



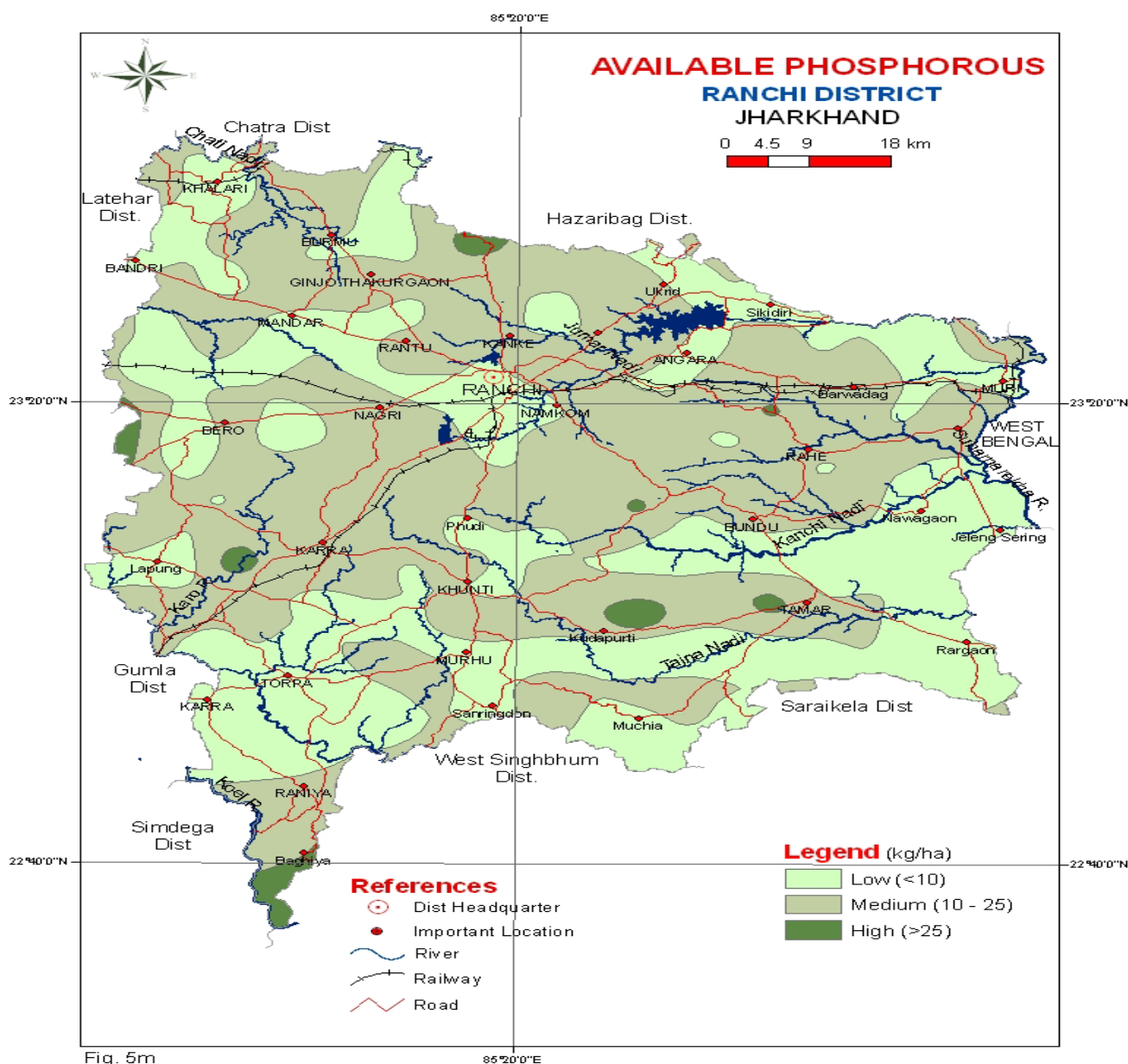
Phosphorus

Available Phosphorus :-

Available phosphorus content in these soils ranges between 0.5 and 26.6 kg/ha. Data reveals that majority of the soils are medium (56.2% of TGA) in available phosphorous content. Soils of 40.1 percent area are low and 1.5 percent area are high in available phosphorous content.

Available Phosphorus (kg/ha ⁻¹)	Area ('00ha)	% of the TGA
Low (below 10)	3091	40.1
Medium (10-25)	4323	56.2
High (above 25)	116	1.5
Miscellaneous	168	2.2
Total	7698	100.00

Gene Campaign (RKVY) BAU



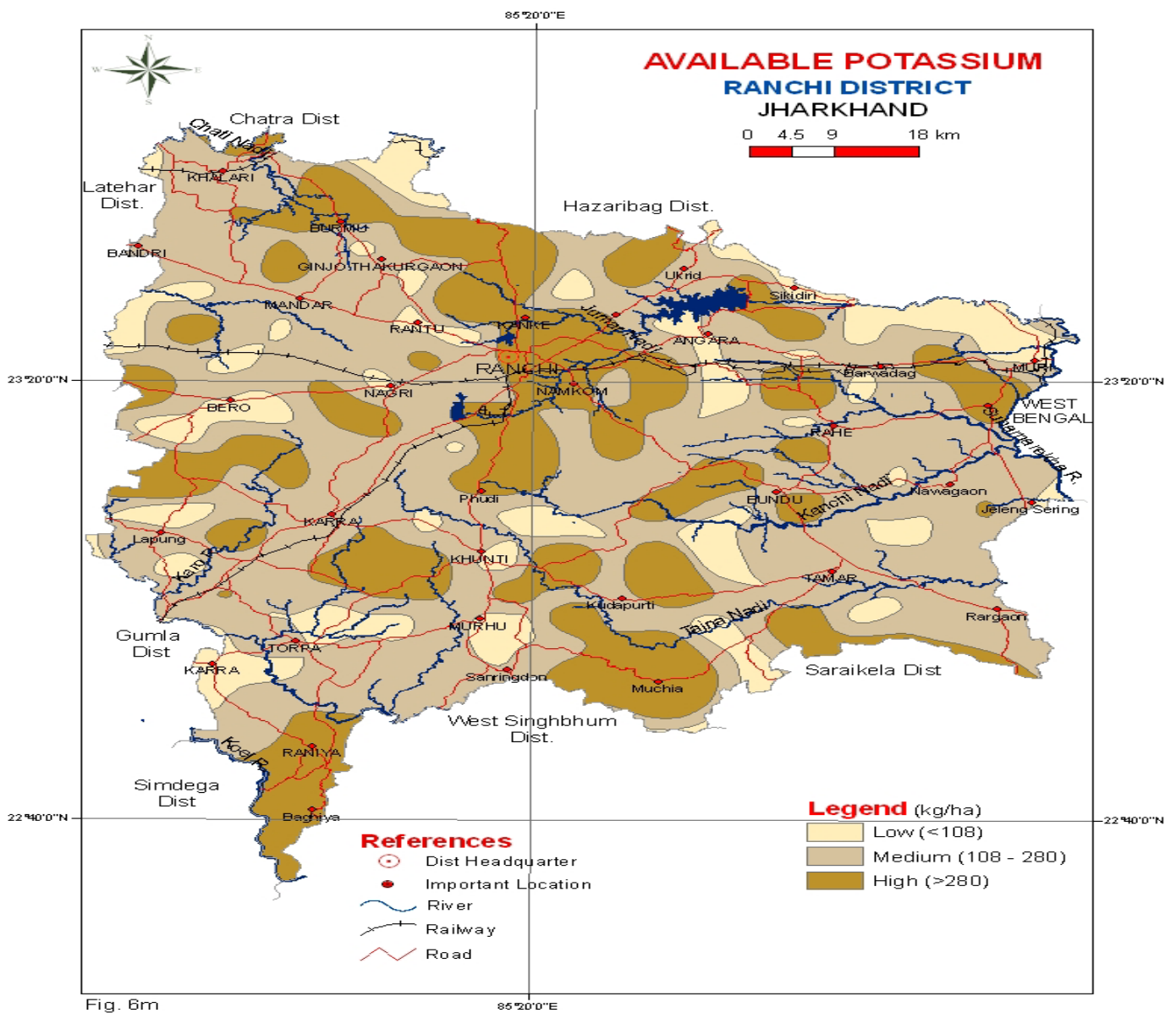
Potassium

Available Potassium :-

Available potassium content in these soils ranges between 49 and 941 kg/ha. The data reveals that majority of the soils (57.1% of TGA) have medium available potassium content (108-280kg/ha⁻¹). Soils of 27.7 percent area are high (above 280 kg ha⁻¹) and 13.0 percent area are low (below 108) in available potassium content.

Available Phosphorus (kg/ha ⁻¹)	Area ('00ha)	% of the TGA
Low (below 108)	1004	13.0
Medium (108-280)	4396	57.1
High (above 280)	2130	27.7
Miscellaneous	168	2.2
Total	7698	100.00

Gene Campaign (RKVY) BAU



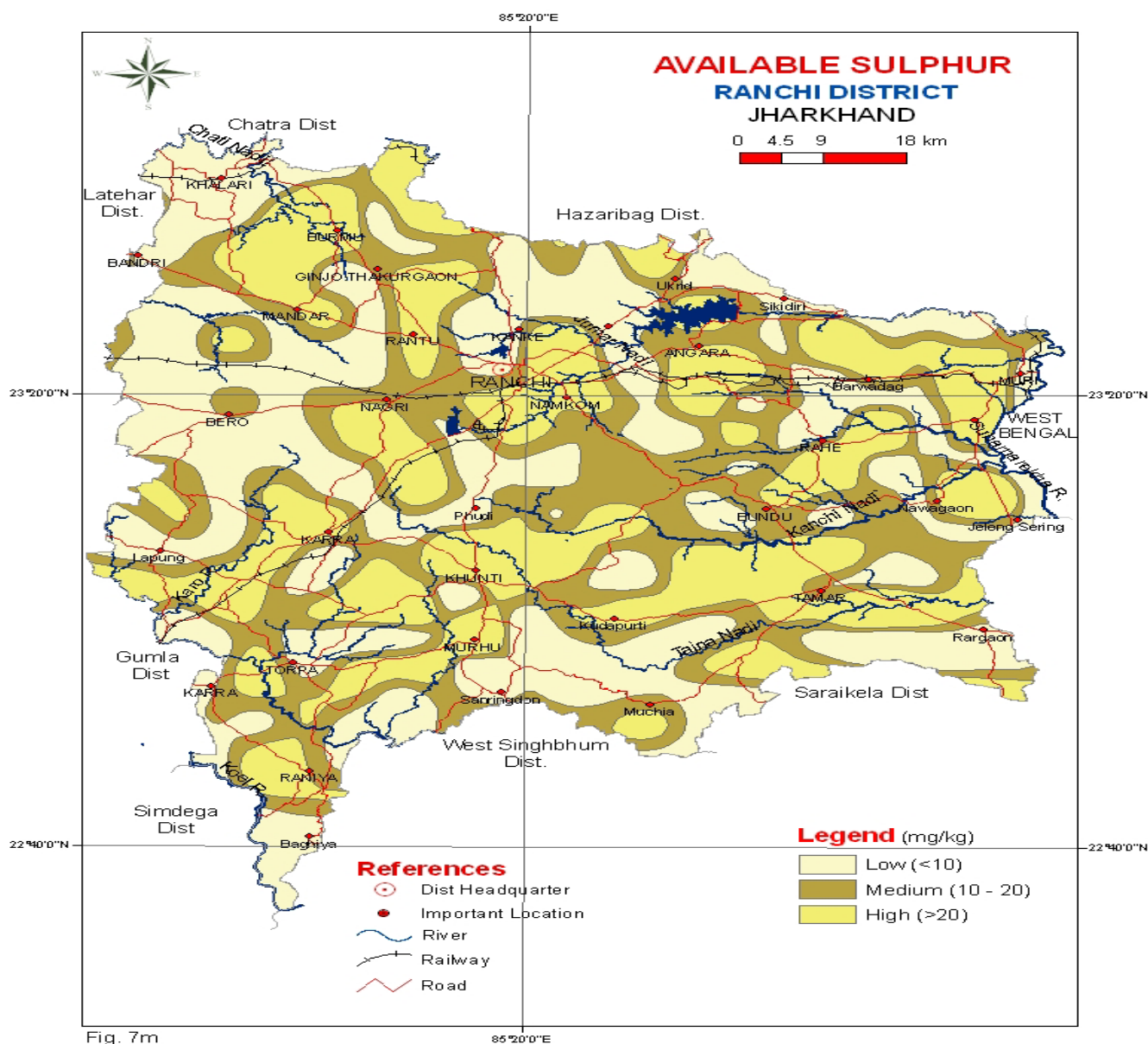
Sulphur

Available Sulphur :-

Available Sulphur content in the soils ranges from 0.64 to 72.13 mg/kg⁻¹ and soils of 36.7 percent of the area are low (<10 mg kg⁻¹) whereas soils of 30.5 and 30.6 percent area are medium (10-20 mg kg⁻¹) and high (>20 mg kg⁻¹) in available sulphur content respectively.

Available Sulphur (kg/ha ⁻¹)	Area ('00ha)	% of the TGA
Low (< 10)	2825	36.7
Medium (10-20)	2350	30.5
High (>20)	2355	30.6
Miscellaneous	168	2.2
Total	7698	100.00

Gene Campaign (RKVY) BAU



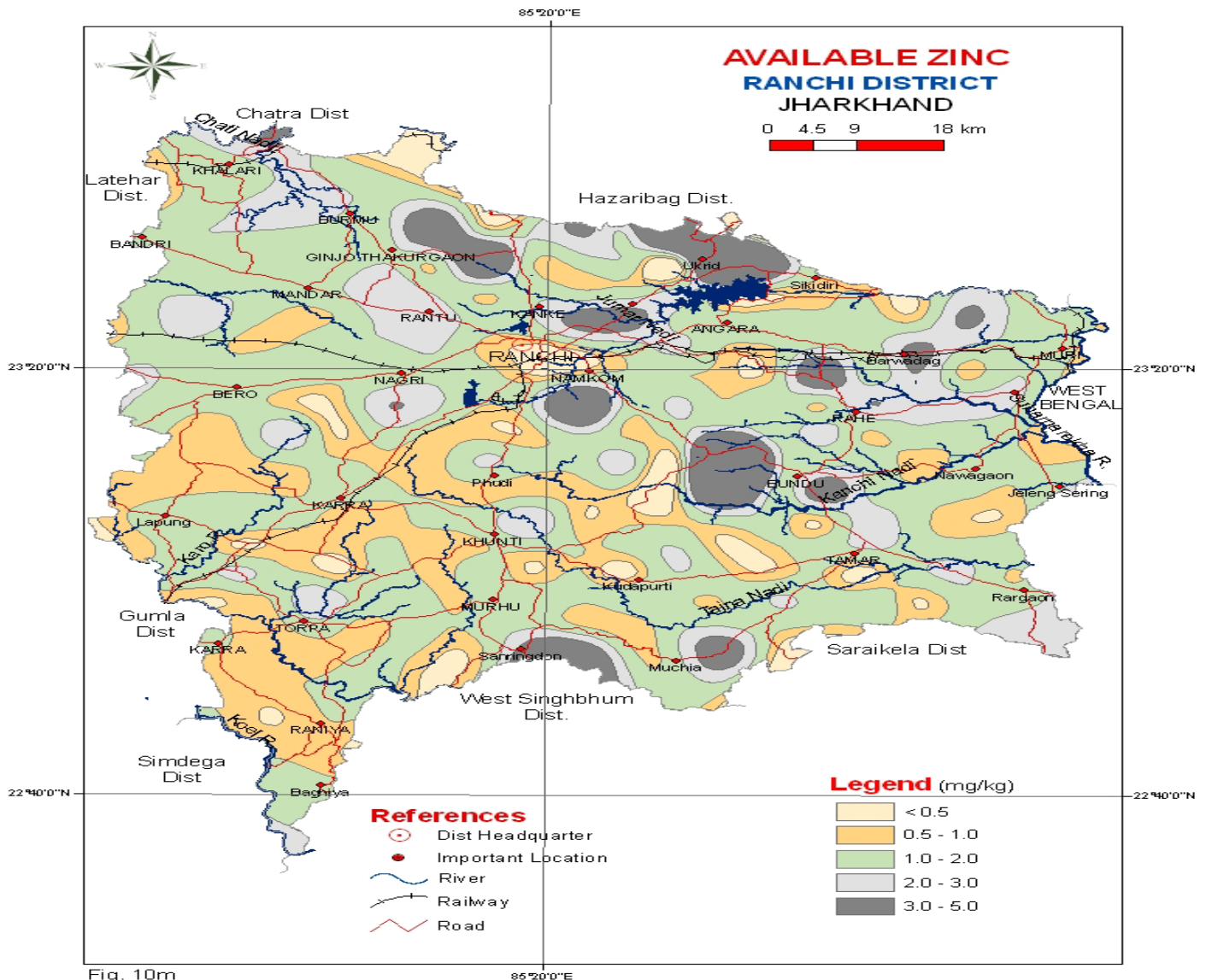
Zinc

Available Zinc :-

Available Zinc in surface soils ranges between 0.26 and 4.86 mg kg⁻¹. They are grouped and mapped into five classes. Soils of Majority of Soils (93.7% of TGA) are sufficient (>0.5 mg kg⁻¹) whereas soils of 4.1 percent area are deficient (<0.5 mg kg⁻¹) in available Zinc.

Available Zinc (kg/ha ⁻¹)	Area ('00ha)	% of the TGA	Rating
<0.5316	316	4.1	Deficient
0.5-1.0	1740	22.6	Sufficient
1.0-2.0	3829	49.7	
2.0-3.0	1174	15.3	
3.0-5.0	471	6.1	
Miscellaneous	168	2.2	
Total	7698	100	

Gene Campaign (RKVY) BAU



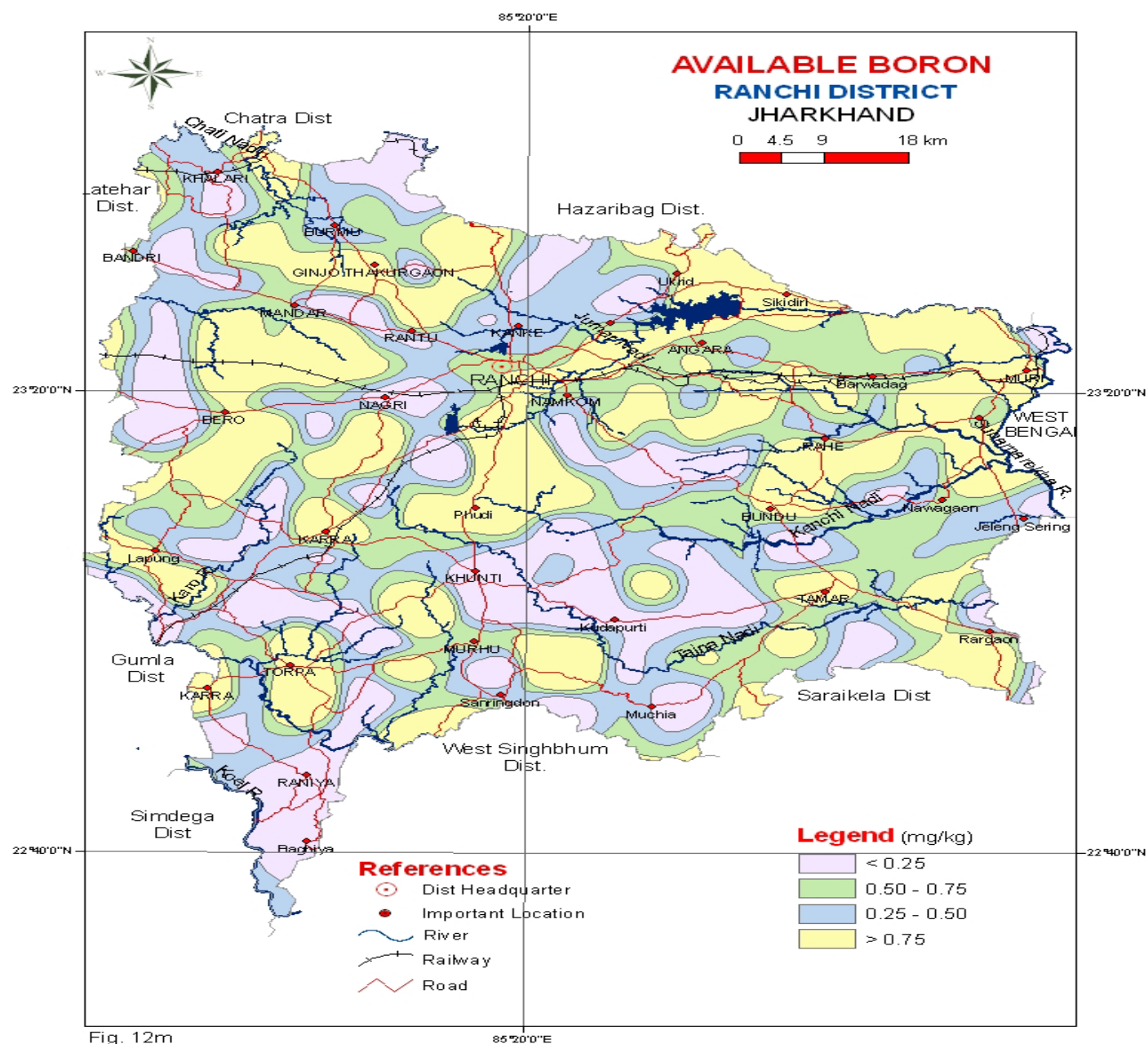
Boron

Available Boron :-

Available boron content in the soils ranges from 0.02 to 3.52 mg kg^{-1} . The critical limit for deficiency of the available boron is <0.5 . Soil of 42.8 percent area of district are deficient ($<0.50 \text{mg kg}^{-1}$) in available boron content.

Available Boron (kg ha^{-1})	Area ('00ha)	% of the TGA	Rating
<0.25	1523	19.8	Deficient
0.25-0.50	1774	23.0	
0.50-0.75	1807	23.5	Sufficient
>0.75	2426	31.5	
Miscellaneous	168	2.2	
Total	7698	100.00	

Gene Campaign (RKVY) BAU



Input Center in the District.

Whole Seller Fertilizer - 10

Retailer - 353

1. Financial Institution in the District.

Sl. No.	Bank	Total	Urban	Semi Urban	Rural
1	BOI	28	8	3	17
2	SBI	33	18	2	13
3	UNION	11	6	-	5
4	UBI	10	3	1	6
5	ALLAH	13	9	-	4
6	CBI	8	7	-	1
7	CANARA	12	10	-	2
8	PNB	6	5	-	1
9	IOB	7	4	1	2
10	UCO	4	3	-	1
11	INDIAN	2	1	-	1
12	OBC	3	3	-	-
13	SBBJ	1	1	-	-
14	BOB	4	2	-	2
15	DENA	1	1	-	-
16	SYN	3	3	-	-
17	ANDHAR	1	1	-	-
18	P&SB	1	1	-	-
19	CORP	1	1	-	-
20	VIJAYA	1	1	-	-
21	BOMB	1	1	-	-
22	FEDERAL	1	1	-	-
23	UTI	1	1	-	-
24	INDUSIND	1	1	-	-
25	IDBI	1	1	-	-
26	HDFFC	1	1	-	-
27	ICICI	2	2	-	-
28	BANK Rajasthan	1	1	-	-
29	Karnataka	1	1	-	-
30	South Indian	1	1	-	-
	Total	161	99	7	55

1.a

Sl. No.	Bank	Total	Urban	Semi Urban	Rural
1	JGB	40	6	2	32
2	RKCCB	12	1	4	7
3	LDB	1	-	-	1
4	FSCS	1	-	-	1
5	BSFC	1	1	-	-
6	SCCD	1	1	-	-
	Total	56	8	6	41

Source :- NABARD, Ranchi.

2. INFORMATION REGARDING MARKETS FOR THE RANCHI DISTRICT COMMODITIES IMPORTED OUTSIDE THE DISTRICT.

SI. No.	Name of Block	Name of the Market Center	Periodicity (weekly/daily)	Important commodities handled	Area covered
1	Ranchi	Pandara Agri. Marketing Year	Daily	Food Grains & Vegetable	Ranchi District.
2	Kanke	kanke, Pithauria	By Weekly	Vegetable	
				Poultry	
				Food Grains e.t.c.	kanke Block.
3	Ratu	Ratu, Makmandro, Nagary	By Weekly	Vegetable	Ratu, Mander Block.
				Poultry	
				Food Grains e.t.c.	
4	Mander	Mander, Brambey, Tagar Basuly	By Weekly	Vegetable	Mander, Chanho, Ratu Blocks.
				Poultry	
				Food Grains e.t.c.	
5	Chanho	Chano, Tangar	By Weekly	Vegetable	Chanho, Mander Block
				Poultry	
				Food Grains e.t.c.	
6	Bero	Bero, Itaki, Kurgai	By Weekly	Vegetable	Bero, mander Block
				Poultry	
				Food Grains e.t.c.	
7	Burmū	Burmū, Thakur Gaon	By Weekly	Vegetable	Burmū, Mander Block
				Poultry	
				Food Grains e.t.c.	
8	Lapung	Lapung,	By Weekly	Vegetable	Lapung Block.
				Poultry	
				Food Grains e.t.c.	
9	Ormanjhi	Ormanjhi, Eraba	By Weekly	Vegetable	Ormanjhi Block.
				Poultry	
				Food Grains e.t.c.	
10	Angara	Angara, Gondali Pokhar	By Weekly	Vegetable	Angara Block
				Poultry	
				Food Grains e.t.c.	

Marketing Board